



Artist Impression. For marketing purposes only.  
Please refer to Contracts for final plan and specification

 **3**
 **2**
 **2**

**VALLETTA HOMES**

**ABERGLASSLYN  
ABERLYN ESTATE  
Lot 324**

**LIBERTY 206**  
 House Area: 206m<sup>2</sup>  
 Build Price: \$433,700  
 Land Area: 730m<sup>2</sup>  
 Land Price: \$440,000  
 Registration: SEPT 2022

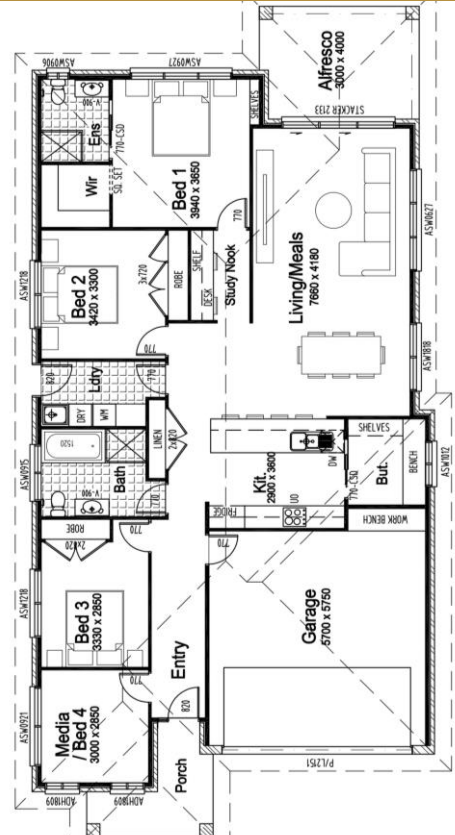
- PREMIUM INCLUSIONS**
- ✓ Full Turnkey Finish
  - ✓ Fully fenced, turfed and landscaped
  - ✓ Caesarstone benchtops
  - ✓ Fujitsu ducted air-conditioning
  - ✓ Fisher & Paykel kitchen appliances
  - ✓ 2400mm high ceilings

**FULL TURNKEY PRICE  
\$873,700**

Proudly Offered By



**Call Tony 0418 433 377**



Valletta Homes office: U12/40 Karalta Road, Erina, NSW, 2250 |  
 Rodney Tullipan 18289C | Matthew Tullipan 281544C | Lavish Contracting PTY LTD 364433C